

Rack In The Cases Ltd

AD:Room 2802,Building A,World Trade plaza,No.8,Fuhong Road,
Futian District,Shenzhen China

Web:www.rackinthecases.org

www.chinaflightcases.com

Email:(Sales):bgtstage@vip.163.com

(Technique):bgt5@vip.163.com

(After-Sales):bgtsports@vip.163.com

P:0755-82500362 0755-82500557

One Case,Racking The World!



**One Case
Racking The World!**

>>>Company profile



Rack in the Cases Limited(RK) is the wholly-owned subsidiary of BlueGiant Group. It runs a professional flight case, stage system and truss facilities in manufacturing and marketing. Currently, RK have three manufacturings bases in Taishan, Dongguan, Foshan respectively with more than 1000 employees. With 14 years of experience in audio & staging business, as well as continuously creative new production, RK's products have been up to the international standards.Its China sales headquarter locates in 2802 WorldTradePlaza,Futian District,Shenzhen,China.

Line up with the goal “One case, Racking the world”, RK supplies high quality service for customers. Take the “brandeffect” as mission, Rk commits to selling his products all over the world.

Explanation of company logo

Primary meaning:

RK=RACK, it reflects the main product of Rack in the Cases Limited.RACK CASE is a major kind of flight case, and also a general term of flight cases. The moral of it,RK is going to be the pioneer of flight case in the world .

Secondary meaning:

R= RIVER, the letter “R” in the logo performances like flowing river. The moral of it,RK will shine more gloriously and have a long history.

Main products: flight case, stage, lighting truss, dance floor, various kinds of bleacher, and so on.

Lead by a manager with decades of design experience, our R&D team is on hand to handle OEM/ODM, We strictly implement the ISO 9001:2008 and get the German TUV Certificate. We adhere to "people-oriented, customer first, continuous innovation", and"professionalism".

Since 2009, we have changed our marketing strategy to looking for RK Sole Agent. currently, we have 7 agents in the world,and the annual sales revenue is above 4.5million US dollars. Since 2011, we are looking for secondary agent in the world.

“One World, One Stage, One RK” commits building world-famous brand as RK's mission, high quality, good service and win-win policy as operation principle.

PROFESSIONAL POWER



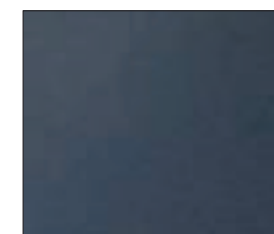
CONTENTS

3	Amp Racks
4	Effect Racks
5	Shock Mount & Double Racks
6	Slant Racks
8	Mixer Case
11	Guitar Case / Guitar Cabinet Case
12	Keyboard Case / Pedal Board Case
13	Mic/Stands Case / Drum Case
14	LP Case / Turntable Case
16	Turntable Coffins
18	CD Case / DJ Workstation
19	Computer/Laptop Case
20	Lighting Case
21	Plasma Case
22	Speaker Case / Utility Trunks
24	Rack Storage Drawers/Others
26	ABS Guita Case
28	ABS Case
29	Aluminium Case
31	Hardwares
34	Foams



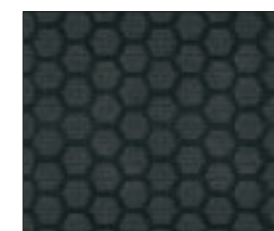
CF Series

CF Series flight cases made by Common Fireproof plywood with RK hardware.



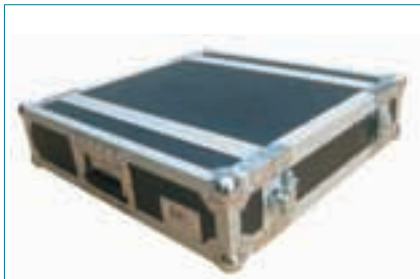
NS Series

NS Series flight cases made by imported Non Slip plywood with RK Hardware, can also use Penn Elcom hardware. High quality series.



Amp Racks

Amp Rack Cases is a kind of case that give best protection to your Amplifier, mixers and any other equipments with rack rails. You can use your equipments in the rack cases. Be moved between locations, or frequently thrown around by airport baggage-handling personnel. A large number of varying-sized rack cases can be built to outfit the needs of an entire touring production company, or custom designed individually for a specific industry or product. It have arrived the quality of ATA 300 Category 1. So our Rack Cases are very strong.

**RK2UAD**

2U AMPLIFIER DELUXE CASE
18" BODY DEPTH

**RK12UAD19**

12U AMPLIFIER DELUXE CASE
19" BODY DEPTH

**RKAED**

3 1/2 INCH, OPTIONAL CASTER KIT WITH BREAKS ON
TWO WHEELS-ECONOMY VERSION

CURRENT MODEL	DESCRIPTION
RK3UAD	3U AMPLIFIER DELUXE CASE - 18" BODY DEPTH
RK4UAD	4U AMPLIFIER DELUXE CASE - 18" BODY DEPTH
RK5UAD	5U AMPLIFIER DELUXE CASE - 18" BODY DEPTH
RK6UAD	6U AMPLIFIER DELUXE CASE - 18" BODY DEPTH
RK8UAD	8U AMPLIFIER DELUXE CASE - 18" BODY DEPTH
RK10UAD	10U AMPLIFIER DELUXE CASE - 18" BODY DEPTH
RK12UAD	12U AMPLIFIER DELUXE CASE - 18" BODY DEPTH
RK12UADC	12U AMPLIFIER DELUXE CASE - 18" BODY DEPTH WITH CASTER BOARD
RK14UAD	14U AMPLIFIER DELUXE CASE - 18" BODY DEPTH
RK14UADC	14U AMPLIFIER DELUXE CASE - 18" BODY DEPTH WITH CASTER BOARD
RK16UADC	16U AMPLIFIER DELUXE CASE - 18" BODY DEPTH WITH CASTER BOARD
RK18UADC	18U AMPLIFIER DELUXE CASE - 18" BODY DEPTH WITH CASTER BOARD
RK20UADC	20U AMPLIFIER DELUXE CASE - 18" BODY DEPTH WITH CASTER BOARD
RK22UADC	22U AMPLIFIER DELUXE CASE - 18" BODY DEPTH WITH CASTER BOARD
RK24UADC	24U AMPLIFIER DELUXE CASE - 18" BODY DEPTH WITH CASTER BOARD

Effect Racks

Effect Rack Cases is a kind of case that give best protection to your effect ,and any other equipments with rack rails. You can use your equipments in the rack cases. Be moved between locations, or frequently thrown around by airport baggage-handling personnel. A large number of varying-sized rack cases can be built to outfit the needs of an entire touring production company, or custom designed individually for a specific industry or product. It have arrived the quality of ATA 300 Category 1. So our Rack Cases are very strong.

**RKWED**

3 1/2 INCH, OPTIONAL CASTER KIT WITH BREAKS ON
TWO WHEELS-ECONOMY VERSION

**RK16UEDW**

16U EFFECT DELUXE CASE - 14" BODY DEPTH WITH
CASTER BOARD

**RK4UED**

4U EFFECT DELUXE CASE - 14" BODY DEPTH

CURRENT MODEL	DESCRIPTION
RK3UED	3U EFFECT DELUXE CASE - 14" BODY DEPTH
RK5UED	5U EFFECT DELUXE CASE - 14" BODY DEPTH
RK6UED	6U EFFECT DELUXE CASE - 14" BODY DEPTH
RK8UED	8U EFFECT DELUXE CASE - 14" BODY DEPTH
RK10UED	10U EFFECT DELUXE CASE - 14" BODY DEPTH
RK12UED	12U EFFECT DELUXE CASE - 14" BODY DEPTH
RK14UEDC	14U EFFECT DELUXE CASE - 14" BODY DEPTH WITH CASTER BOARD
RK16UEDC	16U EFFECT DELUXE CASE - 14" BODY DEPTH WITH CASTER BOARD
RK18UEDC	18U EFFECT DELUXE CASE - 14" BODY DEPTH WITH CASTER BOARD
RK2USED	2U EFFECT DELUXE CASE - 14" BODY DEPTH WITH STORAGE COVER
RK3USED	3U EFFECT DELUXE CASE - 14" BODY DEPTH WITH STORAGE COVER
RK4UEDHW	4U EFFECT DELUXE CASE - 14" BODY DEPTH WITH SOLID METAL PULL OUT HANDLE
RK6UEDHW	6U EFFECT DELUXE CASE - 14" BODY DEPTH WITH SOLID METAL PULL OUT HANDLE
RK8UEDHW	8U EFFECT DELUXE CASE - 14" BODY DEPTH WITH SOLID METAL PULL OUT HANDLE
RK10UEDHW	10U EFFECT DELUXE CASE - 14" BODY DEPTH WITH SOLID METAL PULL OUT HANDLE

Shock Mount & Souble Racks

Shock Mount Amp Rack Cases is a kind of case that give best protection to your amps, mixers and any other equipments with rack rails. Crafted with our exclusive case-within-a-case design that features an unique integral suspension system.Built smart with dual rack rails for flexibility (mounted front and back an 16 1/4 inch rack depth) and two removable covers for easy access to your gear. You can use your equipments in the rack cases. Be moved between locations, or frequently thrown around by airport baggage-handling personnel. A large number of varying-sized rack cases can be built to outfit the needs of an entire touring production company, or custom designed individually for a specific industry or product. It have arrived the quality of ATA 300 Category 1. So our Rack Cases are very strong.

RKNS4UADS
4U AMPLIFIER DELUXE CASE - 18 INCH SHOCK MOUNT

RKNS6UADS
6U AMPLIFIER DELUXE CASE - 18 INCH SHOCK MOUNT

RK8UADS
8U AMPLIFIER DELUXE CASE - 18 INCH SHOCK MOUNT

RKNS12UADSW
12U AMPLIFIER DELUXE CASE - 18 INCH SHOCK MOUNT W/CASTER BOARD

RKNS14UADSW
14U AMPLIFIER DELUXE CASE - 18 INCH SHOCK MOUNT W/CASTER BOARD

RKNS16UADSW
16U AMPLIFIER DELUXE CASE - 18 INCH SHOCK MOUNT W/CASTER BOARD

CURRENT MODEL	DESCRIPTION
RK3UADS	3U AMPLIFIER DELUXE CASE - 18 INCH SHOCK MOUNT
RK5UADS	5U AMPLIFIER DELUXE CASE - 18 INCH SHOCK MOUNT
RK5UADSW	5U AMPLIFIER DELUXE CASE - 18 INCH SHOCK MOUNT W/CASTER BOARD
RK18UADSW	18U AMPLIFIER DELUXE CASE - 18 INCH SHOCK MOUNT W/CASTER BOARD
RK20UADSW	20U AMPLIFIER DELUXE CASE - 18 INCH SHOCK MOUNT W/CASTER BOARD
RK22UADSW	22U AMPLIFIER DELUXE CASE - 18 INCH SHOCK MOUNT W/CASTER BOARD

Slant Racks

RK11M14UCT
11U SLANT MIXER RACK/ 14U VERTICAL RACK WITH SIDE TABLE AND CASTER BOARD

RKM8U
8U VERTICAL 10U SLANT

RKM2U
2U VERTICAL 10U SLANT

RKM12UW
12U VERTICAL 10U SLANT W/CASTER BOARD

RKM16UW
16U VERTICAL 10U SLANT W/CASTER BOARD

RKNS11M16UCT
11U SLANT MIXER RACK/ 16U VERTICAL RACK WITH SIDE TABLE AND CASTER BOARD

CURRENT MODEL	DESCRIPTION
RK6M2U	6U SLANT MIXER RACK / 2U VERTICAL RACK SYSTEM
RK8M4U	8U SLANT MIXER RACK / 4U VERTICAL RACK SYSTEM
RKM10UL	10U SLANT MIXER RACK/ 10 U VERTICAL RACK SYSTE WITH LOCKABLE LATCH
RKM12UL	10U SLANT MIXER RACK/ 12 U VERTICAL RACK SYSTE WITH LOCKABLE LATCH
RKM14UL	10U SLANT MIXER RACK/ 14 U VERTICAL RACK SYSTE WITH LOCKABLE LATCH
RK12M16UCT	12U SLANT MIXER RACK/16U VERTICAL RACK WITH SIDE TABLE AND CASTER BOARD
RK12M18UCT	12U SLANT MIXER RACK/18U VERTICAL RACK WITH SIDE TABLE AND CASTER BOARD
RK12M4URC	12U SLANT MXIER RACK/ 4U VERTICAL RACKSYSTEM W/ REAR RACK RAILS AND CASTER BOARD



Mixer Case

Mixer cases, count on Rack for the most reliable selection anywhere! Our enormous warehouse and free shipping on most items ensure you'll get it fast and at a great value. To help you choose from the many mixer cases available, Rack's friendly Sales Engineers are at your service. They're pros with mixer cases, and can gladly answer any questions you might have. Rack's commitment to quality customer service is second to none, and we look forward to helping you with mixer cases and any other audio gear you need.



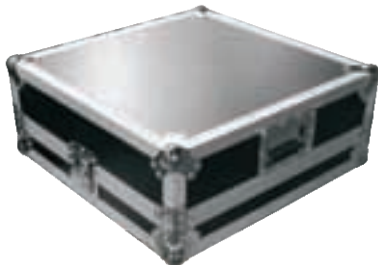
RKTTM56

CASE FOR PIONEER DJM909 MIXER WITH 9" FRONT AND BACK ACCESS DOOR



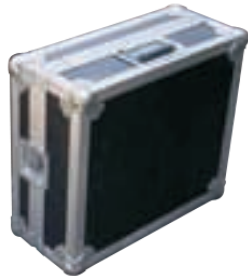
RKM19R

12U UNIVERSAL 19" LIGHTING CONTROLLER CASE WITH RACK RAILS



RKM19

CASE FOR MACKIE 1604 VLZPRO AND 1642 VLZPRO MIXER



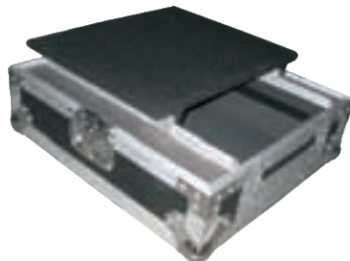
RKONYX1620

CASE FOR MACKIE ONYX 1620 MIXER



RK10MIX

10" DJ MIXER CASE WITH FRONT DOORS AND FLUORESCENT ON ALL TRIMS



RKL10MIX

LAPTOP COMBO 10" DJ MIXER CASE WITH FRONT DOORS FOR 10" MIXERS

CURRENT MODEL	DESCRIPTION
RKMG2414W	YAMAHA MG2414 MIXER CASE WITH LOW PROFILE WHEELS
RKMG2414DHC	YAMAHA MG2414 MIXER CASE WITH CASTERS AND DOGHOUSE
RKLS932DHC	CASE FOR YAMAHA LS9 32 CHANNEL MIXER W/ CASTERS & DOGHOUSE
RKZITHERS	CASE FOR CHINESE ZITHER WITH SURFACE MOUNT HANDLES
RKCS42C	CASE FOR A MIXER DIM'S AT 41.93"W X 25.82"D X 6.26"H W/ CASTERS
RKPRO2203	CASE FOR STUDIO MASTER PRO 2203, INSIDE DIMENSION 25"W X 22"D X 4"H

Mixer Case



RKL12MIX

LAPTOP COMBO 12" DJ MIXER CASE WITH FRONT DOORS FOR 12" MIXERS



RKGL2400432W

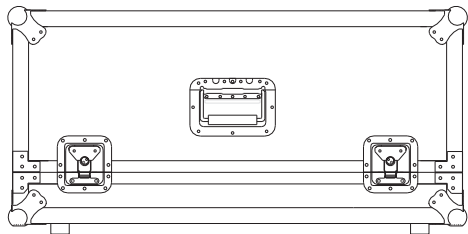
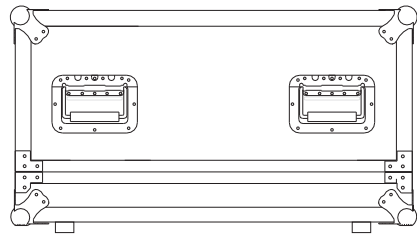
CASE FOR GL2400-432 32 CH MIXER W/WHEELS



RKMG32

CASE FOR YAMAHA MG 32/14FX MIXER

CURRENT MODEL	DESCRIPTION
RKCFX12	LAPTOP COMBO 10" DJ MIXER CASE WITH FRONT DOORS FOR 10" MIXERS
RKCFX16	CASE FOR MACKIE CFX16MKII MIXER
RKM14E	CASE FOR MACKIE 1202 & 1402 MIXERS (ECONOMY VERSION)
RKONYX1220	CASE FOR MACKIE ONYX 1220 MIXER
RKM244	CASE FOR MACKIE SR24.4 MIXER
RKIDJ2	ATA CASE FOR NUMARK IDJ2 W/PULL OUT KEYBOARD TRAY
RKHDMIX	CASE FOR NUMARK HDMIX
RKVCi300	ATA CASE FOR VESTAX VCI300 WITH LAPTOP STORAGE AND PULL OUT VCI300 COMPARTMENT
RK12MIX	LAPTOP COMBO 12" DJ MIXER CASE
RKMPG4000	CASE FOR MPG4000 MIXER
RKNUO4	CASE FOR ECLER NUO 4 MIXER



Mixer Case



RKONYX324W

CASE FOR MACKIE ONYX32.4 MIXER WITH WHEELS



RKCFX20

CASE FOR MACKIE CFX20MKII MIXER



RKEMX

CASE FOR YAMAHA EMX 62M/212S/312SC/512SC MIXERS- ECONOMY VERSION



RKSL3242

CASE FOR BEHRINGER 3242 MIXER



Rk3282

CASE FOR BEHRINGER 3282A MIXER



RKEMX5014

CASE FOR YAMAHA EMX5014C MIXER

CURRENT MODEL	DESCRIPTION
RKDJM909	CASE FOR RANE TTM56 MIXERWITH POWER SUPPLY RS1
RKGL2400424W	CASE FOR A.H. GL2400 424 MIXER
RKGL2400432W	CASE FOR A.H. GL2400 432 MIXER
RKXONE3D	CASE FOR A&H XONE 3D MIXER WITHOUT RACK EARS
RKXONE92DH	CASE FOR A&H XONE 92 /(ZONE 92) W/O RACK EARS, W/ DOG HOUSE
RKM244	CASE FOR MACKIE SR24.4 MIXER
RKPA20	CASE FOR A&H PA-20 MIXER
RKZED22FX	CASE FOR A&H ZED 22FX MIXER

Guitar Case

Guitars the pine of our existence; to be cared for gingerly and tenderly. We understand your relationship with your guitar and your paternal instinct to protect it. That's why we created the guitar cases; the ultimate in guitar protection. Beefy, ATA style construction with swanky adjustable velvet lining to cradle your electric guitar in the perfect lap of luxury. We even threw in a handy compartment for all your accessories. Don't worry we've got you covered. Accept no other, choose wisely, choose the best!



RKGTRB

FITS FENDER JAZZ BASS AND P-BASS



RKGTR

FITS FENDER STRATOCASTER

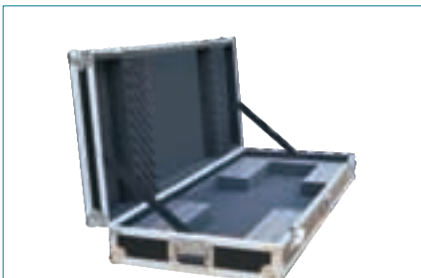


RKGTC

FITS GIBSON GUITAR ACRYLIC SURFACE IS CONVENIENT FOR DISPALAYING GUITAR'S BEAUTY

Keyboard Case

Our keyboard case features our exclusive Z-Lock Foam System that allows you to customize the inner length, width and height of your Flight Case to accommodate virtually any model of Roland, Yamaha, Korg, EM-U and other Brand keyboards. Simply lock or un-lock the layers of Z-Lock Foam to create your perfect custom fit. And for sleek, stealth mobility we equipped each case with our unique low-profile wheels.



RKKB88W

88 KEY BOARD CASE WITH ADJUSTABLE Z-LOCK FOAM AND LOW PROFILE WHEELS



RKNSKB76W

76 KEY BOARD CASE WITH ADJUSTABLE Z-LOCK FOAM AND LOW PROFILE WHEELS



RKKB61W

61 KEY BOARD CASE WITH ADJUSTABLE Z-LOCK FOAM AND LOW PROFILE WHEELS

Guitar Cabinet Case



RKG12C

MESA BOOGIE RECTIFIER STRAIGHT 4X12 CASE



RKG412C

CASE FOR MESA BOOGIE 4X12 TQ AND MARSHALL 1960 4X12 GUITAR COMBO

Pedal Board Case



RKGP17

17" LIGHTWEIGHT GUITAR EFFECTS PEDAL BOARD



RKGP24

24" LIGHTWEIGHT GUITAR EFFECTS PEDAL BOARD



RKGP32

32" LIGHTWEIGHT GUITAR EFFECTS PEDAL BOARD

CURRENT MODEL	DESCRIPTION
RKMBS412C	MESA BOOGIE RECTIFIER STRAIGHT 4X12 CASE0
RKGC212C	CASE FOR GUITAR COMBOS WITH 1 X 12" SPEAKERS - SIZE ADJUSTABLE
RKGAL	LARGE GUITAR AMPLIFIER CASE - SIZE ADJUSTABLE

CURRENT MODEL	DESCRIPTION
RKGPB21	21" GUITAR EFFECTS PEDAL BOARD
RKPED12	PEDAL BOARD CASE FOR PRODUCT DIM'S 19 3/8"W X 12"D X 6 1/8"H
RKPED41	PEDAL BOARD CASE FOR PRODUCT DIM'S 41" IN WIDTH

Mic /Stands case

Your mic is your voice to the world. Protect it. Designed to house virtually and wireless unit out there including Senheisser, AKG, Shure and Nady, Rack Case is built to take care of all your wireless needs. Our exclusive high-density magic Foam allows you to create the perfect custom space for any combination of handheld, headset, or lavalier wireless systems. Simply pick out the magic Foam to customize your case for the perfect fit. If your needs change down the line, just change the foam inserts.



RKM12S
ATA STYLE 12 MICROPHONE CASE FOR 12 MICS W/
STORAGE COMPARTMENT



RKM30S
ATA STYLE 30 MICROPHONE CASE FOR 30 MICS W/
STORAGE COMPARTMENT



RK16MSW
CASE FOR 16 PCS OF MICROPHONE STANDS WITH
PVC TUBE INSIDE WITH CASTER BOARD

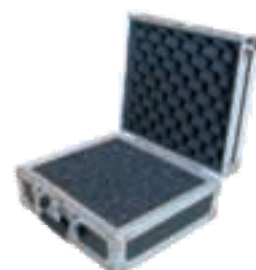
Drum Case



RKCABLEC
CABLE DRUM CASE FOR PATCH CABLE DRUM 90M
DACOME



RKUTILITY
DRUMMER UTILITY TRUNK WITH TWO REMOVABLE
TRAYS & LOW-PROFILE WHEELS



RKUC
SMALL ATA STYLE UTILITY CASE WITH PICK-&-FIT
FOAM

LP Case

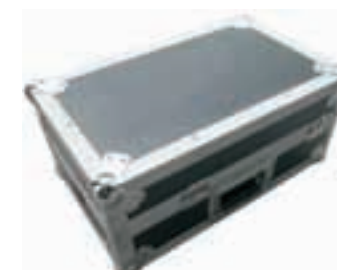


RKLP
DELUXE 80 LP CASE



RKLPHW
CASE FOR 100 LPs WITH PULL-OUT
HANDLE AND WHEELS

Turntable case



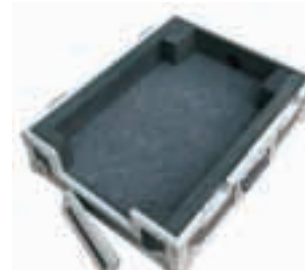
RKDVJ1000
CASE FOR PIONEER DVJ1000 TURNTABLE



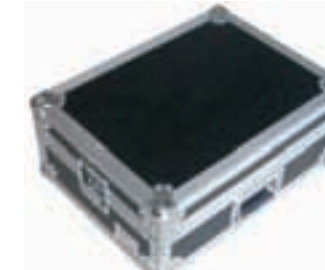
RK1200BMKII
TURNTABLE DELUXE CASE



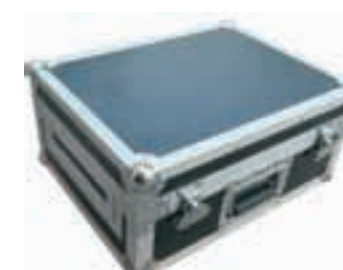
RKCC
CARTRIDGE CASE



RKDVJX1
CASE FOR PIONEER DVJX-1 VIDEO TURNTABLE



RKQFO
CASE FOR VESTAX QFO TURNTABLE/MIXER



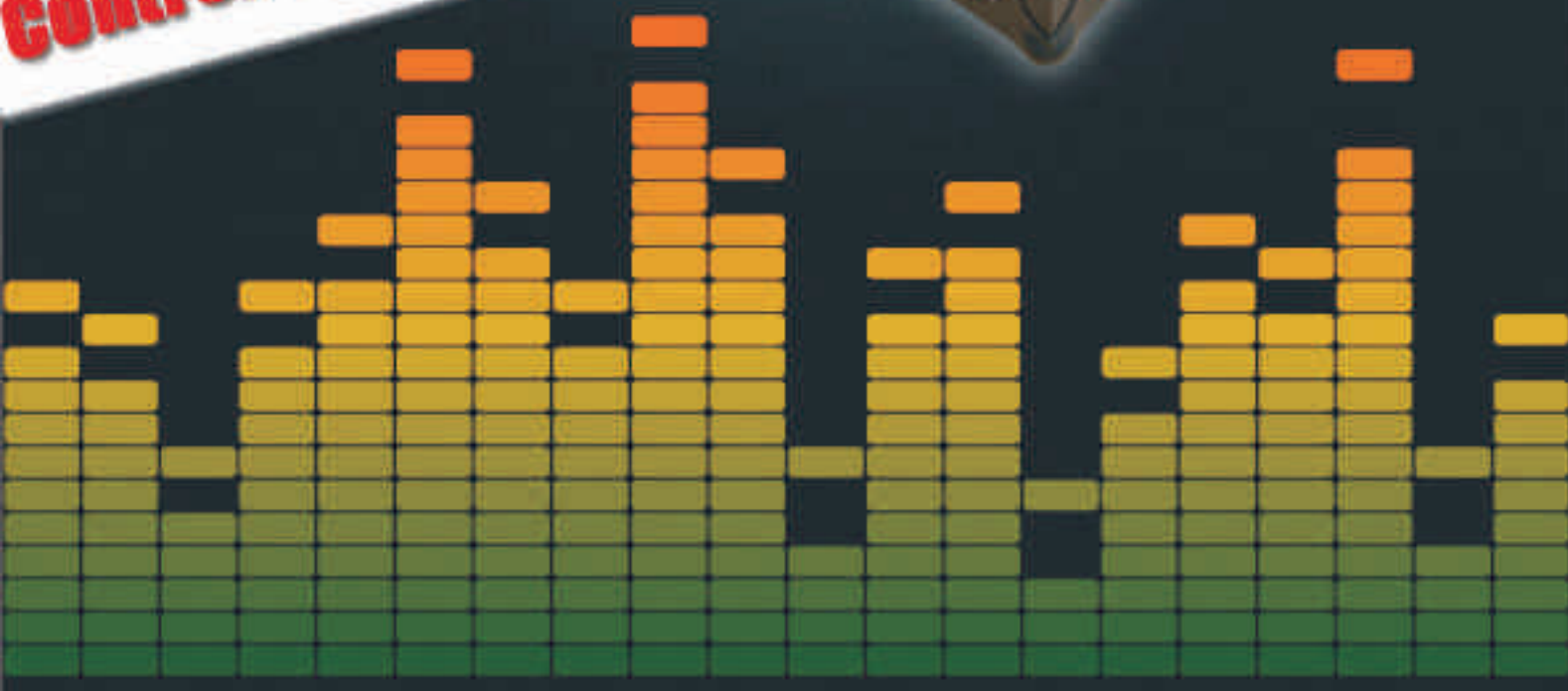
RKX2
CASE FOR NUMARK X2 HYBRID TURNTABLE



RK CASE

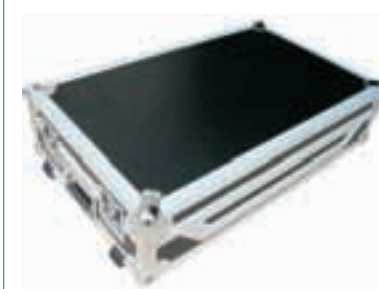
DJ CASE

Controller DDJ-T1



www.rackinthecases.org

Turntable coffins



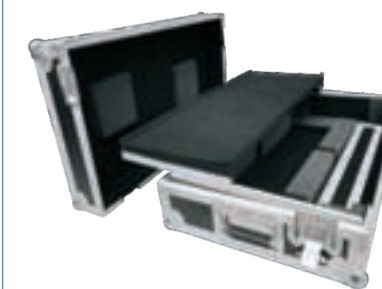
RKNS7WMKII

NUMARK NS7 CASE FOR NS7 DJ CONTROLLER WITH REMOVABLE FRONT AND BACK PANELS



RKNSNS7KWL

MIXER CASE-NUMARK NS7 CASE WITH KEYBOARD TRAY AND LAPTOP TRAY



RKDDJS1T1T

CASE FOR DDJS1T1 WITH LAPTOP TRAY



RKDJ12W

12" MIXER COFFIN WITH WHEELS FOR 2 TURNTABLES / PIONEERDJM 500 OR DJM600 MIXER - BATTLE STYLE



RKDJ19W

2 TURNTABLES / 19" MIXER DJ COFFIN WITH WHEELS



RKDJMW

2 TURNTABLES / PIONEER DJM 500 OR DJM 600 MIXER OR OTHER 12" MIXER WITH WHEELS



RKCDJDJ400W

Two CDJ400/200+DJM400 WITH WHEELS



RKDJ10

2 TURNTABLES / 10" MIXER DJ COFFIN BATTLE STYLE



RKCDJDJ2000WL

CDJ2000+DJM2000+CDJ2000 WITH WHEELS

Rack In The Cases Ltd

Turntable Coffins



RKCDJCD12W

COOL-TONE 12" COFFIN WITH LOW PROFILE WHEELS FOR 2 X PIONEER CDJ1000/CDJ800, MORE



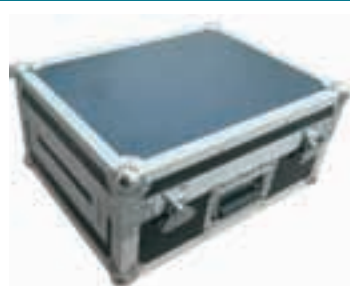
RKDJCDX12W

12" MIXER COFFIN WITH LOW PROFILE WHEELS FOR 2 NUMARK CDX OR HDX TURNTABLES



RKCDP

UNIVERSAL CASE FOR TOP AND FRONT LOADING CD PLAYERS



RKCDX

CASE FOR NUMARK CDX AND HDX DIGITAL CD PLAYERS



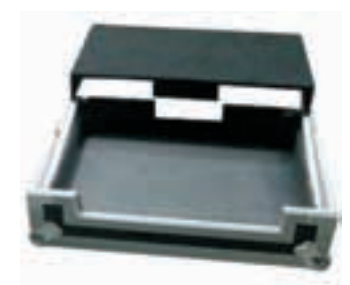
RKCDMIX

CASE FOR NUMARK CDMIX1, CDMIX2, CDMIX3 & KMX01 CD PLAYERS



RKDNS3700

CASE FOR DNS 3700



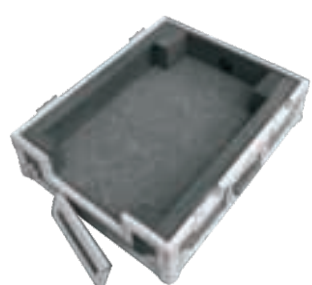
RKGSVMS4

AMERICAN AUDIO VMS4 FLIGHT ZONE™ GLIDE STYLE™ CASE



RKXPNTLT

DJ CSAE FOR M-Audio Torq Xponent WITH LAPTOP TABLE TRAY



RKCCDJ

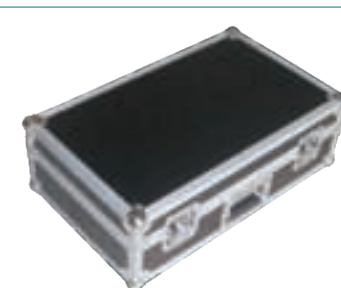
COOL-TONE CASE FOR CDJ-1000 STYLE CD PLAYERS

CD Case



RKCD18

CD CASE FOR 18PCS CD AND BOOKS. CUSTOM BUILD (FORM USE CNC CUT, HIGH DENSITY FOAM)



RKCD200

DELUXE CD CASE, HOLDS 200 JEWEL CASE CD'S



RKCD320

DELUXE CD CASE, HOLDS 320 JEWEL CD'S

DJ Workstation

Designed with the cutting-edge digital DJ in mind, the RKLTWS4 features a customizable, slant-rack laptop compartment capable of accommodating laptops up to 17" with enough space left over to add additional hardware such as the Rane Serato and Native Instruments Traktor Scratch. Forged out of the toughest materials around, the RK-LTWS4 also features a slide out 19" rackmount mixer tray as well as an additional 4U of vertical rack space for your outboard effects. When your gig is over, secure the cover and all of your precious gear is held safely in place for transport. Smart, Simple and 100% RK!



RK4DJWS2

COMPACT DJ WORK STATION WITH 3U VERTICAL, 4U SLANTED AND 2U TOP RACK



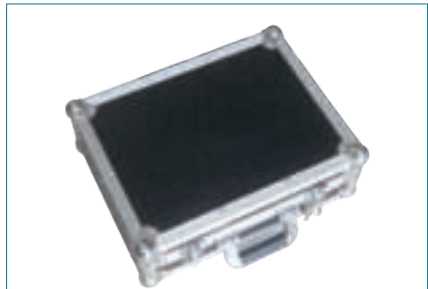
RKDJWS2

DUAL CD, CONTROL & 19" MIXER, DJ WORK STATION, TOP RACK 3U, MID 7U & BOT. 2U

CURRENT MODEL	DESCRIPTION
RKLTWS4	LAPTOP & 4U SLANT RACK COMBO CASE WITH SLIDE OUT MIXER TRAY
RKDJWS4	DUAL CD, CONTROL & 19" MIXER, DJ WORK STATION, TOP RACK 3U, MID 7U & BOT. 4U
RKDJWS8	DUAL CD, CONTROL & 19" MIXER, DJ WORK STATION, TOP RACK 3U, MID 7U & BOT. 8U

Computer/Laptop Case

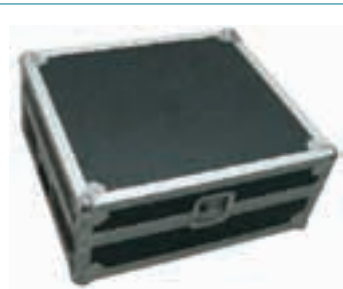
Lighting Case



RKL15
15" DUAL LAPTOP CASE
FITS TWO 15" LAPTOP OR ONE LAPTOP AND VCI 300



RKL17
17" DUAL LAPTOP CASE
FITS TWO 17" LAPTOP OR ONE LAPTOP AND VCI 300



RKIMAC215
COMPUTER CASE FOR APPLE IMAC 21.5" WITH
KEYBOARD AND ACCESSORY STORAGE



RKLAPTOP15
15" LAPTOP CASE
W/ACCESSORY COMPARTMENT



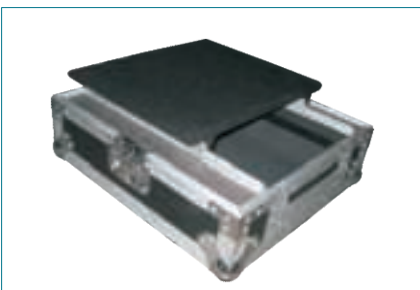
RKLAPTOP17
17" LAPTOP CASE
W/ACCESSORY COMPARTMENT



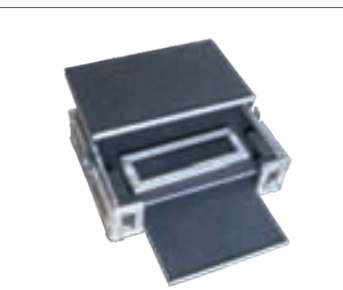
RKIMAC20
CASE FOR APPLE IMAC 20" WITH KEYBOARD AND
ACCESSORY STORAGE COMPARTMENT



RKL12CDJW
12" LAPTOP COFFIN FOR LARGE FORMAT CD
PLAYERS - WITH WHEELS



RKL10MIX
LAPTOP COMBO 10" DJ MIXER CASE WITH
FRONT DOORS FOR 10" MIXERS



RKVCI300
ATA CASE FOR VESTAX VCI300WITH LAPTOP
STORAGE ANDPULL OUT VCI300 COMPARTMENT



RK2MH575CSW
CASE FOR DUAL SGM 575, WASH TYPE MOVING
HEADS IN HANGING , WITH CASTER PLATES, TOP LID



RK2MH250SC
SMALL VERSION - MOVING HEAD CASE FOR 2 X TYPE
250 SMALL HEADS IN HANGING POSITION



RK-4LDBAR
LIGHTING CASE FOR 4 LED BAR
(L112cm x W7.5cm x H(with hinge)12cm, TOP LID



RK2LEDC
LIGHTING CASE FOR 2 LED



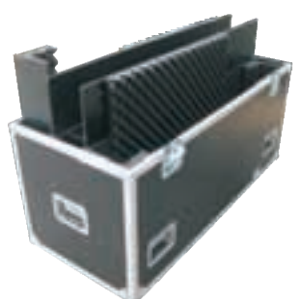
RK10LEDC
LIGHTING CASE FOR 10 LED



RK6408DC
CASE FOR 8 X PAR 64

CURRENT MODEL	DESCRIPTION
RK2MH250C	CASE FOR 2 X 250 HEADS IN HANGING POSITION W/ CASTER BOARD
RK2MH660C	CASE FOR 2 X FUTURELIGHT MH660 WITH CASTER BOARD
RK12SBC	Screen shot for 12 Sunbeam Screen shot , with 6 wheels
RKVL3000C	CASE FOR VARI-LIGHT VL3000 WASH LUMINAIRE OR SPOT LUMINAIRE W/CASTER BOARD
RK2VL2500C	CASE FOR 2 X VARI-LITE VL 2500 WITH CASTER BOARD
RKJR1200	CASE FOR TIMES SQUARE LIGHTING JRIK 1200W FOLLOW SPOT
RK2GIOTTO4CMYC	CASE FOR 2 X SGM GIOTTO SPOT 400 CMY MOVING HEAD WITH CASTER BOARD--COPMARTMENT IN THE BACK
RK2MH575CRW	MOVING HEAD LIGHTING CASE FOR DUAL ROBE 575, WASH TYPE MOVING HEADS IN HANGING PISITION, WITH CASTER PLATES,ORANGE TOP LID

Plasma Case



RK2PLASMA4050CS

Plasma case for 40" to 50" plasma, each case holds two plasmas, with casters and storage.



RKNS-PLASMA50C

UNIVERSAL CASE WITH CASTERS FOR 50 INCH PLASMA MONITORS



RKP47DC

FOR TWO 47" PLASMAS



RKPLASMA42C

42" UNIVERSAL PLASMA MONITOR CASE WITH CASTERS



RKL42C

PLASMA CASE WITH CASTERS FOR 42" LG PLASMAS



RK2PLASMA46CS

PLASMA CASE FOR 46" PLASMA NEC X461UN, EACH HOLD TWO PLASMA, WITH CASTERS AND STORAGE



RKPLASMA24CS

PLASMA CASE FOR 24" PLASMA DELL_G2410 EACH HOLD ONE PLASMA



RK-2LCD47C

PLASMA CASE FOR DUAL PHILIPS 47" LCD7000 SERIES WITH CASTER BOARD, ORANGE TOP LID



RKPLASMA24CS

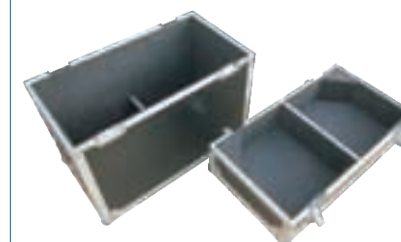
Plasma case for 24" plasma DELL_G2410 each hold one plasma

Speaker Case



RK8MM4XPS

Speaker cases fit for 8 MM-4XP miniature loudspeakers, with storage, cover fixed



RK2SRM450C

FITS TWO Mackie SRM450 SPEAKERS



RKOHMC

FITS ONE OHM SPEAKER

Utility Trunks



RKUC1

WATER RESISTANT UTILITY CASE W/PICK & FIT FOAM



RKUC2

WATER RESISTANT UTILITY CASE W/PICK & FIT FOAM - INTERNATIONAL PROTECTION CLASS STANDARD



RKUC3

WATER RESISTANT UTILITY CASE W/PICK & FIT FOAM



RKHUT1E

HALF SIZE UTILITY TRUNK - (HALF TRUCK PACK)



RKUC804550CDC

UTILITY TRUNK WITH CASTERS - MEASURES 31" X 18" X 20"



RKUT1E

UTILITY TRUNK WITH CASTERS - MEASURES 29.5" X 44.75" X 30" (TRUCK PACK)

Utility Trunks



RKUT1

UTILITY TRUNK WITH CASTER TRUCK PACK, ADJUSTABLE COMPARTMENTS & PULL OUT DRAWER



RKUT50

UTILITY TRUNK NO WHEEL - OUTSIDE MEASURES 50*30*30CM (TRUCK PACK), WITH CASTER BOARD



RKUT60

UTILITY TRUNK NO WHEEL - OUTSIDE MEASURES 60*60*60CM (TRUCK PACK), WITH CASTER BOARD



RKUT120C

UTILITY TRUNK WITH WHEEL, TWO MOVABLE DIVIDERS - OUTSIDE MEASURES 120*60*60CM



RKUT127656CDC

UTILITY TRUNK WITH WHEEL, TWO MOVABLE DIVIDERS - OUTSIDE MEASURES 120*76*56CM



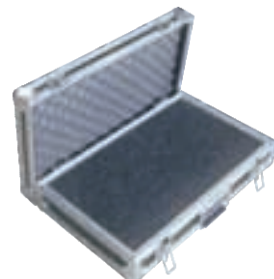
RKUT414133

UTILITY CASE, INSIDE DIMENSION 41x41x33CM



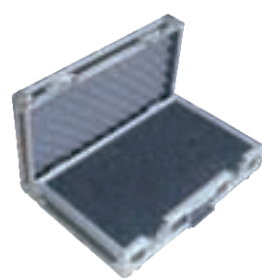
RKUC

SMALL ATA STYLE UTILITY CASE WITH PICK-&-FIT FOAM



RKLUC

LARGE ATA STYLE UTILITY CASE WITH PICK-&-FIT FOAM



RKDRC

DIGITAL RECORDING STUDIO UTILITY CASE WITH PICK-&-FIT FOAM

Rack Storage Drawers

Our Rack Drawer RK4DRAWERC are available in 4 drawer versions, rack spaces can be 12U, 14U ect, and are great for organizing all of your accessories. The drawers, available in 2U, 3U and 4U sizes glide on extension sliders for smooth action.

CURRENT MODEL	DESCRIPTION
RKD14U1C	14U RACK WITH 4 DRAWERS 2X4U AND 2X3U HIGH WITH CASTER BOARD



RK6WD

17 INCH HIGH, 6U ROLLING BASE WITH DRAWER FITS ALL SLANT RACK & AMP RACK MODELS



RKNSD12UC

12U RACK WITH 4 DRAWERS; 1X4U, 2X3U, AND 1X2U HIGH WITH CASTER BOARD



RKD16U1C

16U RACK WITH 5 DRAWERS; 2X4U, 2X3U, AND 1X2U HIGH WITH CASTER BOARD

Others



RK50COUPLER

CASE FOR 50PCS COUPLERS AND PINS



RKMWDFSC

MOVABLE WARDROBE AND MAKE-UP CASE FOR FASHION SHOW



RKDA THRONE

MOVABLE SOFA CASE WITH DRAWER FOR VIP IN EXHIBITION, LID AS TABLE AVAILABLE



ABS Guita Case

RKCC-500M

Classical Style PVC guitar case
(flat)for 39" Fender Guitar



RKCC-500GM

Classical Style PVC guitar case
(arch)for 39" Fender Guitar



RKJC-500M

PVC jewellery flat wooden case
Thickness of the piano body:
12inch and 16inch



RKJC-500GM

PVC jewellery arched wooden case
Thickness of the piano body:
12inch and 16inch



RKWC-500M

PVC folk falt wooden case
Fit for 41 inch Fender Guitar



ABS Guita Case

	<p>RKEC-500</p> <p>Square ABS electric guitar case 1048*430*145mm</p>
	<p>RKEC-500M</p> <p>Square PVC electric guitar case</p>
	<p>RKBC-500</p> <p>Square ABS electric bass case 1262*430*145mm</p>
	<p>RKBC-500M</p> <p>Square PVC electric bass wooden case</p>



ABS Case

		
RK10UABS	RK8UABSH	RK4UABS
		
<p>RKMIC6UABS</p> <p>6U receiver mic case with depth 210mm</p>	<p>RKMIC4UABS</p> <p>4U receiver mic case with depth 210mm</p>	<p>RK6U10U8U</p> <p>Front: 6U Top: 10U Back: 8U</p>

CURRENT MODEL	DESCRIPTION
RK2UABS	2U ABS CASE
RK3UABS	3U ABS CASE
RK6UABS	6U ABS CASE
RK12UABS	12U ABS CASE
RK2U6U4U	ABS DJ CASE Front: 2U Top: 6U Back: 4U
RK4U6U6U	ABS DJ CASE Front: 4U Top: 6U Back: 6U
RK4U10U6U	ABS DJ CASE Front: 4U Top: 10U Back: 6U
RK8U10U10U	ABS DJ CASE Front: 8U Top: 10U Back: 10U
RK10U10U12U	ABS DJ CASE Front: 10U Top: 10U Back: 12U

Aluminium Case



RKLB3450

Tool case 450X330X125mm



RKLB250

Tool case 250X200X100mm



RKLB480N

Tool case 480X330X135mm



RKA255A

Cosmetic case 225X190X110mm



RKA240C

Cosmetic case 240X190X100mm



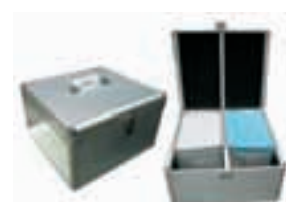
RKLA215

Cosmetic case 215X180X100mm



RK100CD

CD case 191X160X185mm



RK200CD

CD case 306X192X185mm



RK600CD

CD case 458X378X185mm



HARDWARES

Hardwares

RKCAF001 Ball Corner	RKCAF001PBS Stacking ball corner	RKCAF001PBD Dual stacking ball corner	RKCAF002PBO Flat corner	RKCAF002PBOS Flat stacking corner
RKCAF002PBOL Flat left stacking corner	RKCAF003F 90°Ball corner	RKCAF003FS Stackable ball corner	RKCAF004 Mini ball corner	RKCAF005 Mini flat corner
RKCAF005S Short flat corner	RKCAF006 Brace ball corner	RKCAF006L Left brace stacking corner	RKCAF006R Right Brace stacking corner	RKCAB001 Brace/Clamp
RKCAB001C Corner clamp	RKCAB001B Corner clamp with wrinkle	RKCAB001CB Flat corner clamp	RKCAB002 Middle 90°corner clamp	RKCAB003 L corner clamp

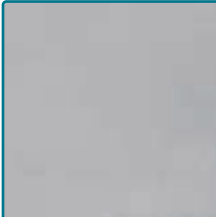

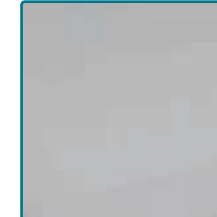





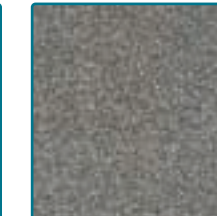
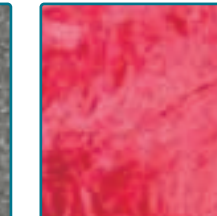

Hardwares

RKCAB004 Lockable clamp	RKCAB005 Z clamp	RKCAL001 Recessed latch	RKCAL002 Lockable latch with key	RKCAL003 Latch with key
RKCAL004 Large recessed latch	RKCAL005 Big latch without plates	RKCAF006 Mini latch without plate	RKCAH001 Handle	RKCAH002 Large handle
RKCAH003 Surface handle	RKCAL004 Strap handle	RKCAL005 Briefcase handle	RKCAI001 Apart hinge	RKCAI002 Fixable&Remove hinge
RKCAI003 4" Hinge	RKCAS001 Mini stay	RKCAS002 Large stay	RKCAS003 Custom stay	RKCAS004 Piano hinge

Hardwares

				
RKCAT001 Single angle extrusion	RKCAT002 Double angle extrusion	RKCAT003 Aluminium angle	RKCAT004 Tongue and Groove	RKCAT005 Tongue and Groove with wings
				
RKCAT006 Aluminum rail	RKCAC001 Caster	RKCAC001B Caster with lock	RKCAC002 Heavy duty caster	RKCAC002B Heavy duty caster with lock
				
RKCAC003 Blue caster	RKCAC003B Blue caster with lock	RKCAC004 Blue wheel	RKCAW001 Profile wheels	RKCAE001 Rubber feet
				
RKCAR001 Wheel cup	RKCAD001 Ball catch	RKCAU001A Single L bracket	RKCAU002 Dual L bracket	RKCAA001 Heavy-duty Pull-out handle

Foams

				
RKCF001 EVA	RKCF002 BVF	RKCF003 EVA(E)	RKCF004 F	RKCF005 PF
				
RKCF006 EF	RKCF007 BB	RKCF008 RF	RKCF009 CP	RKCF010 W(RED)
				
RKCF011 "Z"F				

